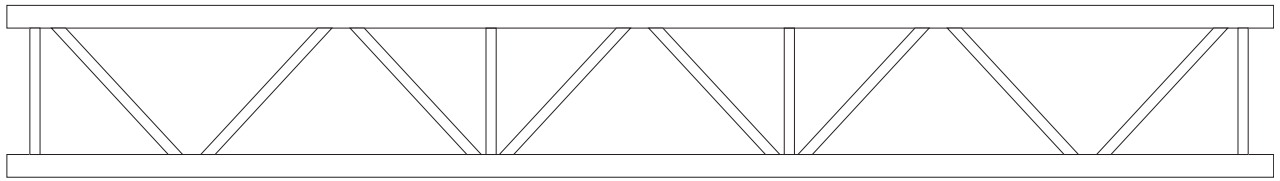
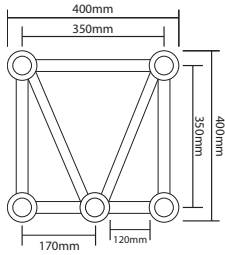


400mm 5 Chord Truss Test Report



3m example shown above.

Certifications and Compliance

Report No: 20190190M01
 Independent Inspection & Testing Company: Alfa Test (ISO17025 & Nata Accreditation)
 Location of Test: VFM Audio, Banyo Qld

Static Load Test and Results

Test Procedure: TP 123
 Test Spec: Client's Requirements
 Requirements: Static Load Testing of 15m x 400mm Truss Section

- Uniform Distributed Load (UDL) per/meter of 100 Kg over 15m (5 x 3m lengths)
- Centre Point Load (CPL) of 600 kg
- Two point load
- Three point load
- Four point load

Test Results: PASS

Product Specification

Description: 5 Chord Truss Section 5m x 3m lengths (Industry standard 400 truss)
 Brand: Titan AV
 Model Number: TR-SQ405
 Product Specification:

- Connecting Cross Section: 350mm x 350mm
- Material (Main Tube, Brace & End connector): Aluminium 6082-T6
- Main Tubes: 50mm x 4 mm
- Braces: 25mm x 3mm



Titan AV 400mm 5 Chord Truss Bottom Centre Chord < 1:100 Deflection*

SPAN (M)	UDL (KG/M)	CPL (KG)	Two Point Load	Three Point Load	Four Point Load
1	700	700	NIL	NIL	NIL
2	700	700	500	NIL	NIL
3	700	700	500	500	NIL
4	600	600	500	500	500
5	600	600	500	500	500
6	600	600	500	500	500
7	473	600	500	500	500
8	365	600	500	500	500
9	290	600	500	500	480
10	234	600	500	500	440
11	192	600	500	500	400
12	160	600	500	460	360
13	135	600	500	420	330
14	115	600	500	390	300
15	100	600	500	360	280

Bottom centre chord loading only with acceptable deflection < 1 : 100 (Acceptable truss deflection for general use applications)

* PLEASE NOTE: Load table information is supplied as a guide only. Please consult your structural engineer for advice related to your application.



Unit 8, 50 Raubers Road Banyo QLD 4014
 P: (07) 3423 3463
 E: sales@vfmaudio.com.au
 W: www.vfmaudio.com.au



400mm 5 Chord Truss Test Report

Titan AV



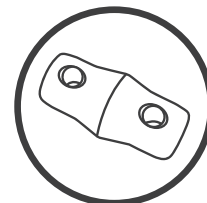
Titan AV 400mm 5 Chord Truss Bottom Centre Chord < 1:300 Deflection*

SPAN (M)	UDL (KG/M)	CPL (KG)	Two Point Load	Three Point Load	Four Point Load
1	600	500	NIL	NIL	NIL
2	600	500	500	NIL	NIL
3	600	500	500	500	NIL
4	600	500	500	500	500
5	600	500	500	500	500
6	578	500	500	500	500
7	358	500	500	500	500
8	235	500	500	495	389
9	161	500	500	381	299
10	113	500	415	298	234
11	81	500	328	235	185
12	59	444	261	187	147
13	43	353	207	149	117
14	32	279	163	117	92
15	29	217	127	91	72

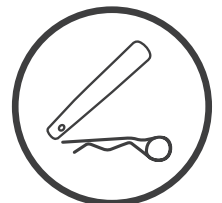
Bottom centre chord loading only with acceptable deflection < 1 : 300 (Acceptable truss deflection for suspension of LED screen applications)

Titan AV 400mm 5 Chord Truss Product Range

VFM Part ID	Length	Weight of Length	Approved For Rigging
TR-SQ405-100	1 m	16.0 kg	Y
TR-SQ405-200	2 m	28.0 kg	Y
TR-SQ405-300	3 m	40.0 kg	Y



4 x Spigots included as standard



8 x Clips and Pins included as standard

* PLEASE NOTE: Load table information is supplied as a guide only. Please consult your structural engineer for advice related to your application.