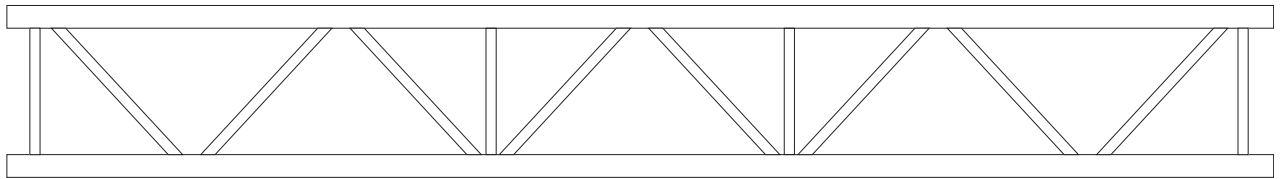
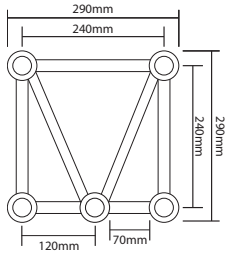


290mm 5 Chord Truss Test Report

Titan AV



3m example shown above.

Certifications and Compliance

Report No: 20190190M02

Independent Inspection & Testing Company: Alfa Test (ISO17025 & Nata Accreditation)

Location of Test: VFM Audio, Banyo QLD

Static Load Test and Results

Test Procedure: TP 123

Test Spec: Client's Requirements

Requirements: Static Load Testing of 12m x 290mm Truss Section

- Uniform Distributed Load (UDL) per/meter of 80 Kg over 12m (4 x 3m lengths)
- Centre Point Load (CPL) of 400 kg
- Two point load
- Three point load
- Four point load

Test Results: PASS

Product Specification

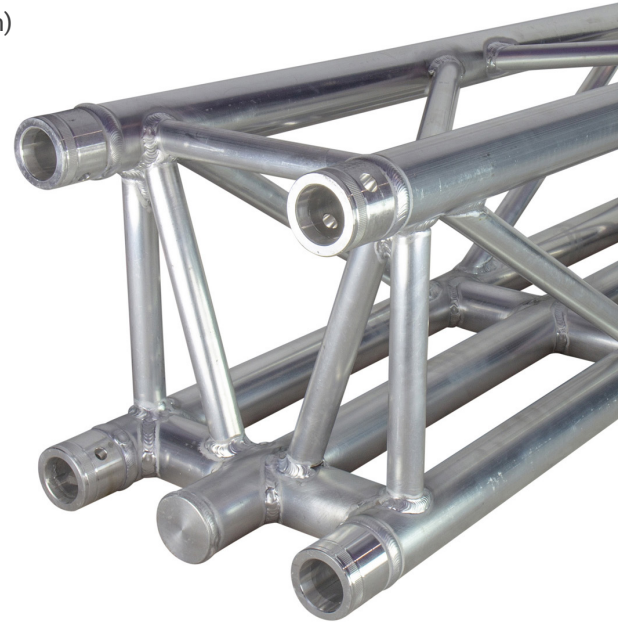
Description: 5 Chord Truss Section 4m x 3m lengths (Industry standard 290 truss)

Brand: Titan AV

Model Number: TR-SQ305

Product Specification:

- Connecting Cross Section: 240mm x 240mm
- Material (Main Tube, Brace & End connector): Aluminium 6082-T6
- Main Tubes: 50mm x 3 mm
- Braces: 25mm x 3mm



Titan AV 290mm 5 Chord Truss Bottom Centre Chord < 1:100 Deflection*

SPAN (M)	UDL (KG/M)	CPL (KG)	Two Point Load	Three Point Load	Four Point Load
1	500	500	NIL	NIL	NIL
2	500	500	500	NIL	NIL
3	500	500	500	500	NIL
4	400	400	400	400	400
5	300	400	400	400	350
6	245	400	400	400	300
7	205	400	400	400	250
8	170	400	400	340	207
9	140	400	400	280	173
10	115	400	380	230	144
11	95	400	320	190	120
12	80	400	260	160	100

Bottom centre chord loading only with acceptable deflection < 1 : 100 (Acceptable truss deflection for general use applications)

* PLEASE NOTE: Load table information is supplied as a guide only. Please consult your structural engineer for advice related to your application.

290mm 5 Chord Truss Test Report



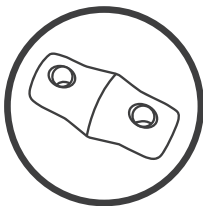
Titan AV 290mm 5 Chord Truss **Bottom Centre Chord < 1:300 Deflection***

SPAN (M)	UDL (KG/M)	CPL (KG)	Two Point Load	Three Point Load	Four Point Load
1	500	500	NIL	NIL	NIL
2	500	500	500	NIL	NIL
3	325	260	325	260	NIL
4	260	260	260	260	260
5	195	260	260	260	260
6	159	260	260	260	195
7	112	220	220	220	137
8	93	220	220	187	113
9	63	180	180	126	78
10	52	180	171	103	64
11	43	180	144	86	54
12	36	180	117	72	45

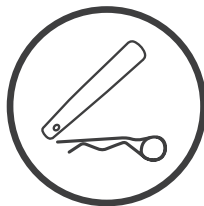
Bottom centre chord loading only with acceptable deflection < 1 : 300
(Acceptable truss deflection for suspension of LED screen applications)

Titan AV 290mm 5 Chord Truss Product Range

VFM Part ID	Length	Weight of Length	Approved For Rigging
TR-SQ305-100	1 m	13.0 kg	Y
TR-SQ305-200	2 m	22.0 kg	Y
TR-SQ305-300	3 m	30.0 kg	Y



4 x Spigots included as standard



8 x Clips and Pins included as standard



* PLEASE NOTE: Load table information is supplied as a guide only. Please consult your structural engineer for advice related to your application.



Unit 8, 50 Raubers Road Banyo QLD 4014
P: (07) 3423 3463
E: sales@vfmaudio.com.au
W: www.vfmaudio.com.au

